

SSW SERIES

Switch for Automotive Safety Integrity Level Applications

C&K's SSW series is an innovative SMT Subminiature Snap Switch dedicated to ASIL related applications including electronic parking brake systems and by-wire functions. It can also be used in industrial and medical markets where functional safety is required.

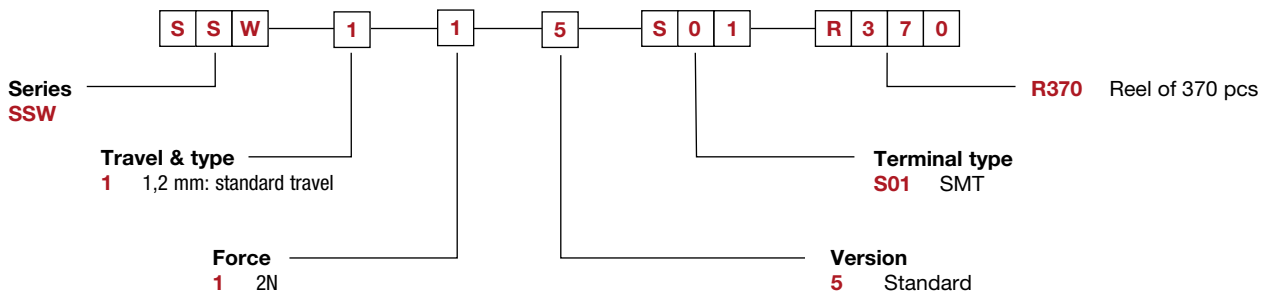
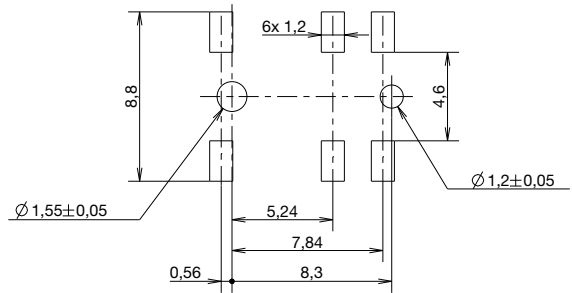
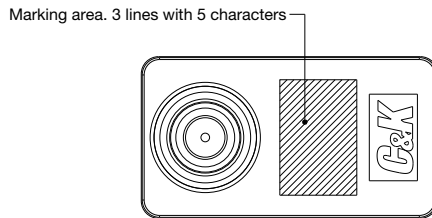
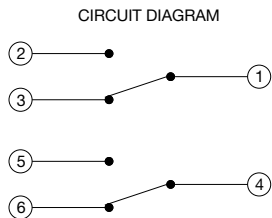
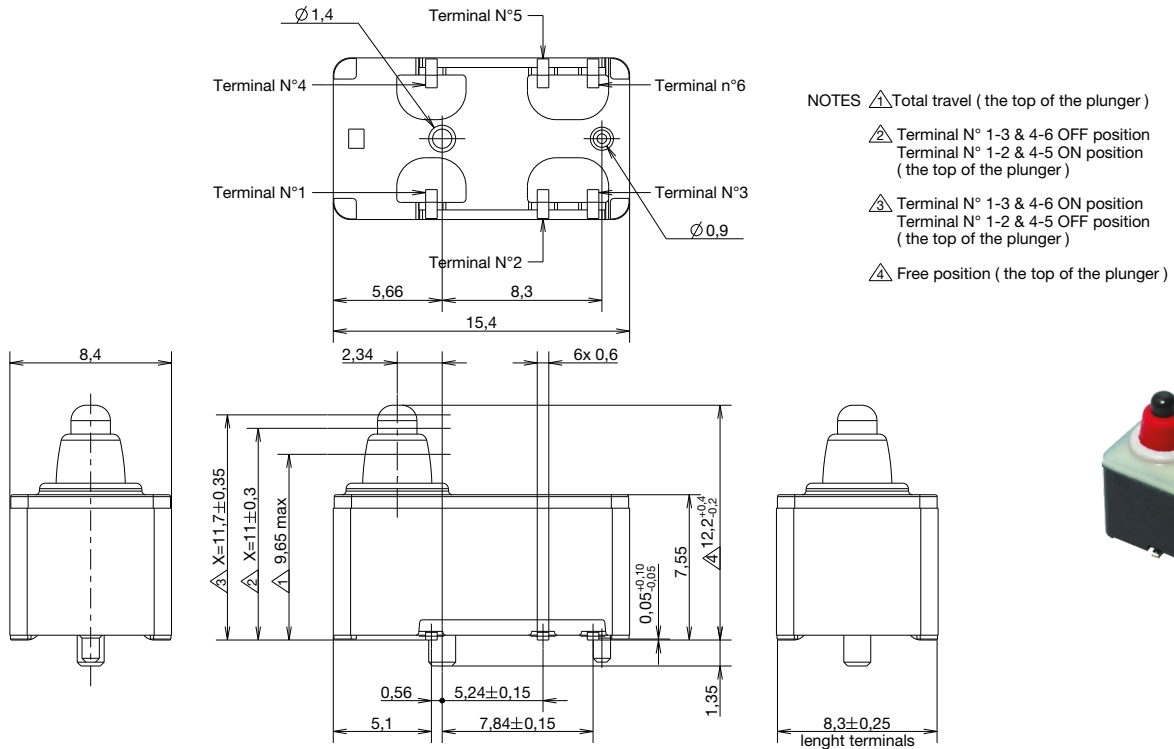


The SSW switch features

- Redundant contacts
- Double throw for self failure detection
- Change over time <15ms
- Top and side actuation
- Low acoustics
- IP67 sealing
- High reliability



SSW SERIES



* Other versions available upon request.
Please consult your customer service.