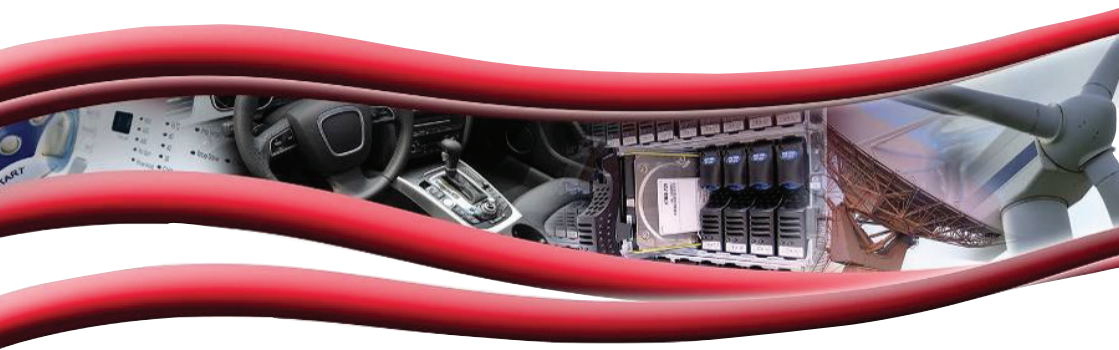




---

## C&K SWITCHES FOR SMOKE DETECTORS

## SO<sub>2</sub> QUALIFICATION



[www.ckswitches.com](http://www.ckswitches.com)

## SO<sub>2</sub> QUALIFICATION

According to European standards, all smoke detectors need to be compliant with IEC 60068-2-42:2003 which is the sulphur dioxide test for contacts and connections. It can be tested either at the system level or switch level.

This protocol calls for a rigorous 4 day test with a temperature of 25°C, SO<sub>2</sub> concentration  $25 \times 10^{-6}$  and relative humidity at 93% for compliance with European standards.

Since this qualification can also be given at the switch level, C&K has qualified some of its products to the IEC 60068-2-42:2003 standards so they can be integrated in any system going into a smoke detector in Europe.

The part numbers listed on the next page are compliant with the SO<sub>2</sub> qualification at the switch level.




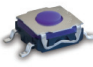
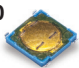


C&K offers additional products that can be integrated in smoke detectors and are compliant with these regulations when the system in which they are installed is sealed against SO<sub>2</sub>.

## ADDITIONAL INFORMATION

Standard part number features are available on our website. C&K recommends contacting your local sales representative to confirm product availability. Technical specifications are available on request, on our website under the "Contact Tech Support" item or through your sales representative.



## PRODUCTS WITH SO<sub>2</sub> QUALIFICATION

SERIES	DESIGNATION	P/N
<b>KMR</b> 	KMR621NG LFS	Y78B62120FP
	KMR621NG ULC LFS	Y78B62124FP
	KMR631NG LFS	Y78B63124FP
	KMR631NG ULC LFS	Y78B63124FP
	KMR721NG LFS	Y78B72120FP
	KMR721NG ULC LFS	Y78B72124FP
	KMR731NG LFS	Y78B73120FP
<b>KMT</b> 	KMT021NGJ LHS	Y34H02122FP
	KMT071NGJ LHS	Y34H07122FP
	KMT071 NGJ ULC LHS	Y34H07132FP
	KMT031NGJ LHS	Y34H03122FP
	KMT031 NGJ ULC LHS	Y34H03132FP
<b>KSC</b> 	KSC221J LFS	Y31B11132FP LFS
	KSC221G LFS	Y31B11136FP LFS
	KSC241J LFS	Y31B41132FP LFS
	KSC241G LFS	Y31B41136FP LFS
	KSC421J 70SH LFS	Y31C21441FP LFS
	KSC421G 70SH LFS	Y31C21445FP LFS
	KSC441J 70SH LFS	Y31C41441FP LFS
	KSC441G 70SH LFS	Y31C41445FP LFS
	KSC401J 50SH LFS	Y31C01241FP LFS
	KSC401G 50SH LFS	Y31C01245FP LFS
	KSC1001J LFS	Y31C01402FP LFS
	KSC1001G LFS	Y31C01401FP LFS
	KSC4D1J 50SH LFS	Y31CD1241FP LFS
	KSC4D1G 50SH LFS	Y31CD1245FP LFS
	KSC2D1J LFS	Y31CD1132FP LFS
	KSC2D1G LFS	Y31CD1136FP LFS
	KSC721J LFS	Y31A21473FP LFS
KSC721G LFS	Y31A21477FP LFS	
<b>KSE</b> 	KSEM31J LFS	Y17K11531FP
	KSEM31G LFS	Y17K11532FP
	KSEK43J LFS	Y17K11541FP LFS
	KSEK43G LFS	Y17K11542FP LFS
<b>PTS530</b> 	PTS530 GM055 SMTR LFS	Y97DT23B2ABFP
	PTS530 GH055 SMTR LFS	Y97DT23B4ABFP
	PTS530 GK055 SMTR LFS	Y97DT23B5ABFP
<b>PTS810</b> 	PTS810 SJM250 SMTR LFS	Y97LT25B2DBFP
	PTS810 SJK250 SMTR LFS	Y97LT25B5DBFP
<b>RTE</b> 	RTE10B0G14	Y36CB0413FP LFT
	RTE10F0G14	Y36CF0413FP LFT

TACT SWITCH

## C&K SERIES OFFERING FOR SMOKE DETECTORS



### KMT0

Typical application:  
reset and test button

#### Key specifications:

- IP68
- Operating life: 300,000 to 1,000,000 cycles
- Ultra low current versions => increases battery lifetime



### KSC

Typical application:  
reset and test button

#### Key specifications:

- Top or side actuated
- Operating life: 100,000 to 1,000,000 cycles
- Customization possible due to flexible manufacturing

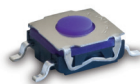


### KMR

Typical application:  
reset and test button

#### Key specifications:

- Ultra-low consumption
- Operating life: up to 300,000 cycles
- Customization possible due to flexible manufacturing

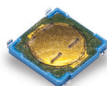


### KSE

Typical application:  
reset and test button

#### Key specifications:

- IP67 sealing
- Operating life: 300,000 cycles
- Cost optimized solution



### PTS530

Typical application:  
reset and test button

#### Key specifications:

- 0,55mm thickness
- Operating life: 150,000 to 1,000,000 cycles
- Cost optimized solution



### PTS810

Typical application:  
reset and test button

#### Key specifications:

- Up to 6N actuation force
- Operating life: up to 150,000 cycles
- Cost optimized solution



### RTE

Typical application: Identify the location of smoke detectors in premise

#### Key specifications:

- Miniature size with robust stainless steel cover
- Rotary binary-decimal and hexadecimal coding
- Operating life: 20,000 actuations for RTE04/10/16

#### AMERICAS

Tel: +1.617.969.3700

#### ASIA

Tel: +852.3713.5288

#### EUROPE

Tel: +33.1.60.24.51.51

