

# CCM04 MK3 Series



## Features

- SIM and SAM card acceptance
- Compatible with pick and place and lead free soldering

## Typical Applications

- Mobile
- POS
- Identification
- GPS

## Mechanical

Number of contacts	6 or 8
Mechanical life	30,000 cycles
Card insertion force	10N max
Card extraction force	1N min / 10N max
Contact force	0,35N min to 0,65N
Vibration Frequency	10 to 500 Hz. Acceleration 50m/s <sup>2</sup> Duration 6 hours - amplitude 0,35mm
Shock	Peak value 500 m/s <sup>2</sup> – Duration 11 ms 3 shocks in each direction of each axis
Max elect. discontinuity	1µs

## Packaging

See table below

## Soldering Process

Compatible with lead free SMT soldering process

## Contact Electrical Data

Insulation resistance	1000 MΩ min
Contact resistance max	100 mΩ max
Switching current	10 µA min / 1 A max
Dielectric strength	750 Vrms min

## Environmental Data

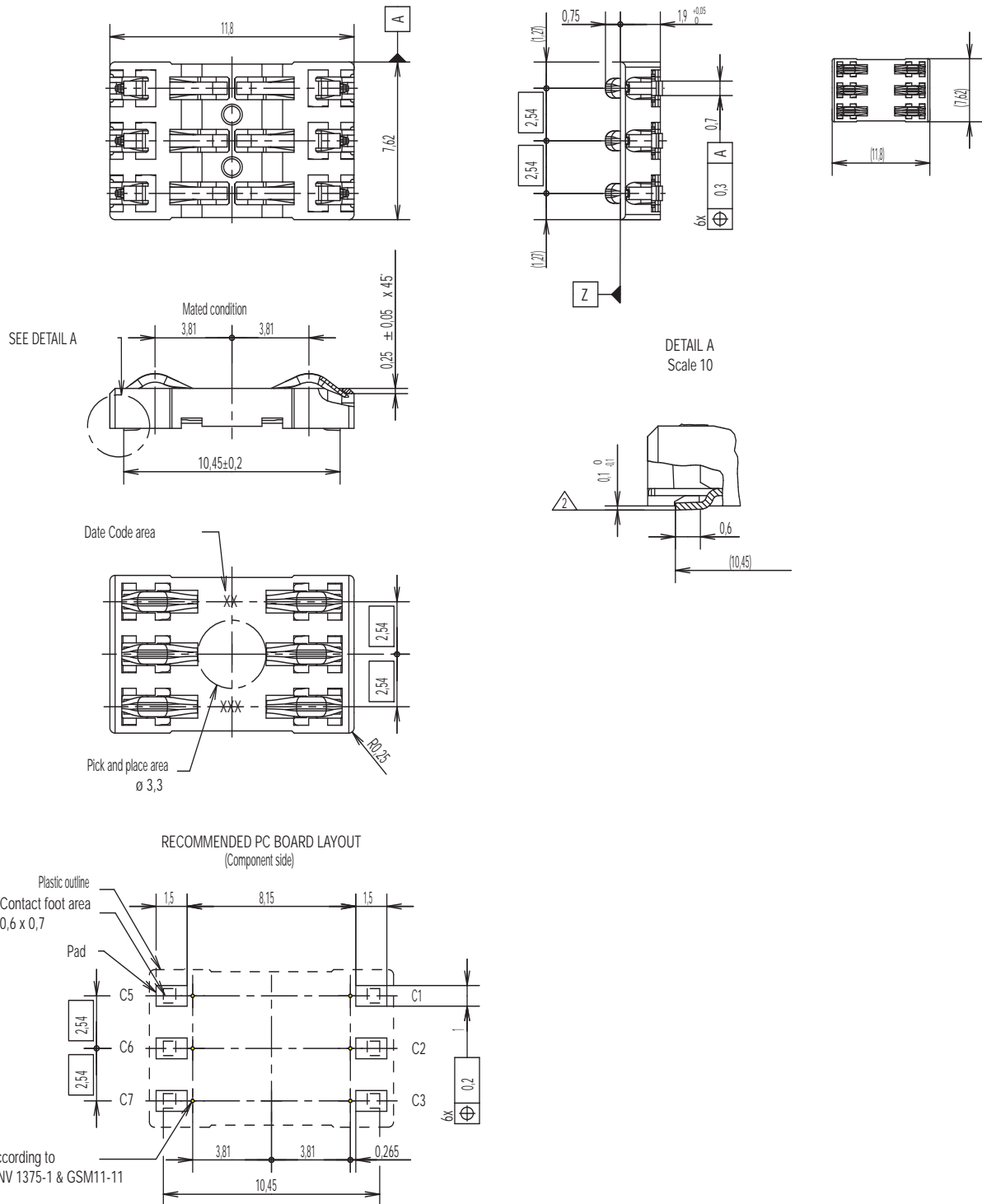
Operating temperature	-40°C to +85°C
Salt mist	IEC 512 test number 11f (96 hours)
Damp heat	IEC 512 test number 11c (10 days)
RoHS compliant	

SIM/SAM

Designation	# of Contacts	Contact Plating	PCB Version	Height (mm)	Dim. (mm)	Packaging
CCM04-5137LFS	6	gold	SMT IN	1,9	8,15 X 10,45	reels of 1,900 pcs

# CCM04 MK3 Series

CCM04-5137 LFS



SIM/SAM



Dimensions are shown in mm  
Specifications and dimensions subject to change

www.ck-components.com