

# CN Series

## Double Pole Power Rocker Switches



### Agency Approvals

Agency	Agency File Number
	E42363

### Specifications

<b>Contact Rating</b>	See table for Q and QA ratings on the last page of this series.
<b>Electrical Life</b>	10,000 make-and-break cycles at full load.
<b>Dielectric Strength</b>	1,500 Vrms min. @ sea level
<b>Insulation Resistance</b>	10 <sup>9</sup> Ω min.
<b>Operating Temperature</b>	-20°C to 85°C

### Description

The CN series double pole power rocker switch is a quality, long-lasting switch designed for use in power supply, industrial equipment and HVAC products. Featuring optional illumination and multiple actuator and termination styles, the robust design of the CN series guarantees to make your products stand out.

### Features & Benefits

- Illuminated versions available
- Multiple actuator and termination styles
- Robust design
- Custom version upon request
- RoHS compliant

### Applications

- Appliances
- Office equipment
- Computers and peripherals
- Off-road vehicles
- Industrial machines
- HVAC units
- Transportation

### Materials

<b>Actuator &amp; Housing</b>	6/6 nylon (UL 94 V-2), black, matte finish
<b>Illuminated Actuator</b>	Polycarbonate, matte finish
<b>Center Contacts</b>	Silver plated, copper alloy
<b>End Contacts</b>	Silver plated Ag <sub>2</sub> SuO <sub>2</sub> InO <sub>3</sub>
<b>All Terminals</b>	Silver plated, copper alloy

#### Notes:

Specifications and materials listed above are for switches with standard options. For information on specific and custom switches, consult Customer Service Center.

### Ordering Number

To order, simply select desired option from each category and place in the appropriate box. For additional options not shown in catalog, consult Customer Service Center.

CNxxx - xx - x - xx - xx - x - xx - x			
<b>Switch Function</b> CN201: DPDT On-None-On CN202: DPST On-None-Off CN221: DPST On-None-Off		<b>Lamp Rating</b> (NONE): No lamp 7: 125 VAC neon 8: 250 VAC neon	
<b>Actuator</b> J1: Rocker J3: Illuminated rocker J6: Rocker J8: Illuminated rocker		<b>Contact Material</b> Q: Silver QA: Silver (with HP rating)	
<b>Actuator Color</b> 2: Black 1: White 3: Red R: Red, illuminated A: Amber, illuminated G: Green, illuminated		<b>Actuator Marking</b> (NONE): No marking D: ON-OFF H: "O I" - international ON-OFF P: "O -" international ON-OFF	
		<b>Terminations</b> 15: 0.187" Quick connect 05: 0.250" Quick connect	
		<b>Mounting Style/Color</b> S2: Snap-in, black S4: Snap-in, black S1: Snap-in, white S3: Snap-in, white	

#### Notes:


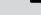



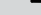
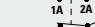
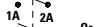

1. CN22 — for switches with both marking and illumination

# CN Series

## Double Pole Power Rocker Switches



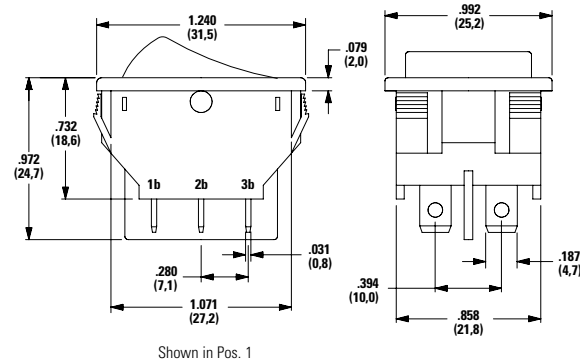
### Switch Function

No. Poles	Model No.	Switch Function			Connected Terminals			Schematic	
		C&K marking on opposite side							
		POS.1 	POS.2 	POS.3 	POS.1 	POS.2 	POS.3 		
DP	CN201	ON	NONE	ON	2-1, 4-5	N/A	2-3, 6-5		
DP	CN202	ON	NONE	OFF	2-1, 4-5	N/A	OPEN	 Or  For Illuminated Version	
DP	CN221 <sup>1</sup>	ON	NONE	OFF	2-1, 4-5	N/A	OPEN		

**Note:**

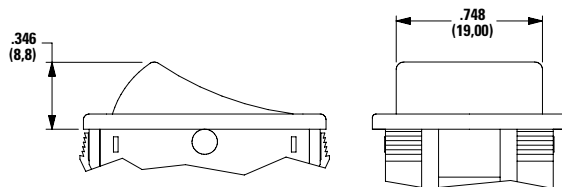
1. CN22 — for switches with both marking and illumination

### Inches (mm)



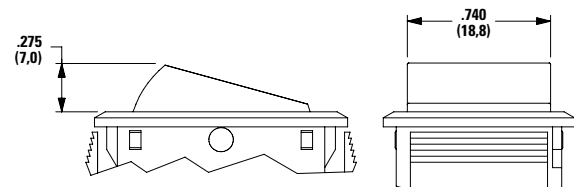
### Actuator inches (mm)

#### J1 Rocker J3 Illuminated Rocker



**Note:** J1 & J3 actuators available with Q contact rating only. J3 actuator available with CN202 & CN22 switch function only.

#### J6 Rocker J8 Illuminated Rocker



**Notes:** J6 & J8 actuators available with QA contact rating only. J6 actuator available with CN201 & CN202 switch functions, J8 actuator available with CN202 & CN22 switch function only.

Option Code	Actuator Color
2	Black
1	White
3	Red
R	Red, Illuminated
A	Amber, Illuminated
G	Green, Illuminated

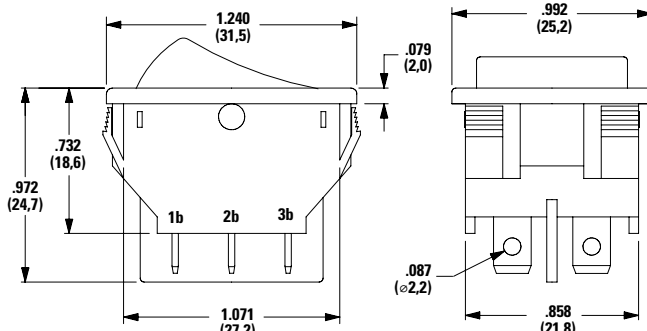
# CN Series

## Double Pole Power Rocker Switches



### Mounting Style/Color inches (mm)

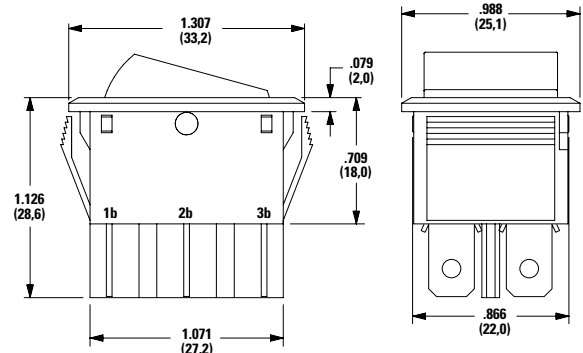
**S2 Snap-in, Black**  
**S1 Snap-in, White**



Shown in Pos. 1

**Note:** Available with 15 termination and Q contact rating only.

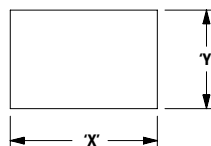
**S4 Snap-in, Black (Short-Frame)**  
**S3 Snap-in, White**



Shown in Pos. 1

**Note:** Available with 05 termination and QA contact rating only.

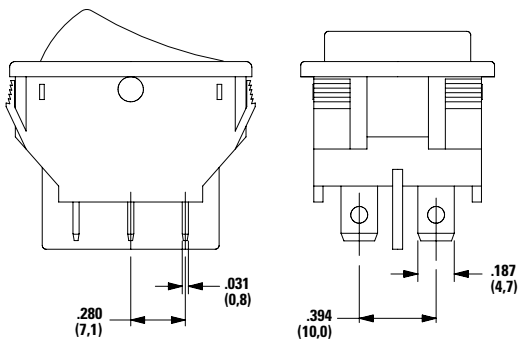
### Panel Mounting



Panel Thickness	"X"	"Y"
0.030-0.049 (0.75-1.25)	1.190-0.004 (30.2-0.1)	0.874 + 0.004 (22.2+0.1)
0.049-0.079 (1.25-2.0)	1.197-0.004 (30.4-0.1)	
0.079-0.118 (2.0-3.0)	1.213-0.004 (30.8-0.1)	

### Termination inches (mm)

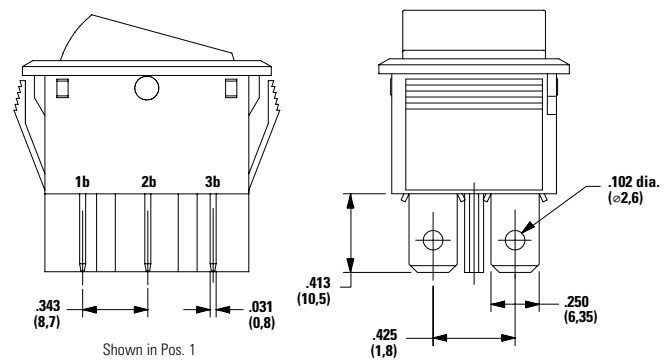
**15 0.187" Quick Connect**



Shown in Pos. 1

**Note:** Available with S1 & S2 mounting style and Q contact rating only.

**05 0.250" Quick Connect**



Shown in Pos. 1

**Note:** Available with S3 & S4 mounting styles and QA contact rating, CN201 & CN202 switch functions only.

# CN Series

## Double Pole Power Rocker Switches



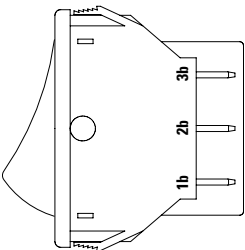
Actuator Markings

None No Marking

D On-Off

H O |

P O -



Shown in Pos. 1

Note: Orientation of actuator marking and terminals.

Contact Material

Option Code	Contact and Terminal Material	Ratings	
Q	Silver	Power	16A @ 125C 1/3 HP @ 125 V AC 10A @ 250 V AC ½HP @ 250 V AC
QA¹	Silver	Power	16A @ 125 VAC, 1/8 HP @ 125 V AC; 10A @ 250 VAC, 1/3 HP @ 250 V AC

Notes:  
1. QA is cURus cULus

Lamp Rating

- (NONE) No Lamp
  - 7 125 VAC 33kΩ Neon
  - 8 250 VAC 150kΩ Neon
- Note: Lamp rating for J3 & J8 actuator option.

Disclaimer Notice - Information furnished is believed to be accurate and reliable. However, users should independently evaluate the suitability of and test each product selected for their own applications. Littelfuse products are not designed for, and may not be used in, all applications. Read complete Disclaimer Notice at <http://www.littelfuse.com/disclaimer-electronics>.

