

PM Series

5 Tumbler Miniature Snap-in Switchlocks



Description

Those that design point-of-sale terminals and marine equipment need a high-quality switchlock that can stand up to repeated use. That's why PM series 5 tumbler miniature snap-in switchlock series is so popular. With snap-in mounting, optional wire lead terminations and positive detent, it gives designers exactly what they need to create a successful product.

Features & Benefits

- International agency listings
- Snap-in mounting
- Wire lead terminations available
- 5 Tumbler lock with positive detent

Applications

- Computers
- Point-of-sale terminals
- Marine equipment

Agency Approval

Agency	Agency File Number
	E42363

Specifications

Contact Ratings	Q contact material: 4 amps @ 125 V AC or 28 V DC; 2 amps @ 250 V AC (UL / CSA); 4 amps @ 125 V AC, 2 amps @ 250 V AC, T65 (VDE). See page 3 for additional ratings.
Contact Resistance	Below 10 m Ω typ. initial @ 2-4 V DC, 100 mA, for both silver and gold plated contacts.

Electrical Characteristics

Electrical Life	10,000 make-and-break cycles at full load.
Insulation Resistance	10 ⁹ Ω min.
Dielectric Strength	1,000 Vrms min. @ sea level.
Indexing	90°: 2 positions

Materials

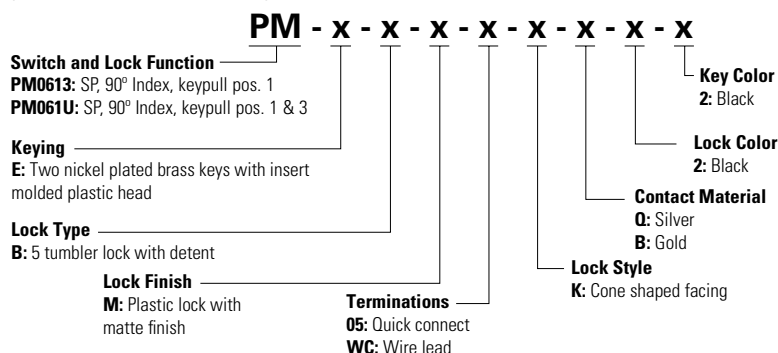
Lock	6/6 nylon with matte finish (UL 94V-2), color black, 5 tumbler, single bitted lock with integral detent mechanism.
Keys	Two nickel plated brass keys with black plastic head, other colors available.
Switch Housing	6/6 nylon (UL 94V-2).
Contacts and Terminals	Q contact material: Copper, silver plated. See page 3 for additional contact materials

Notes:

Any models supplied with Q or B contact material are RoHS compliant. Specifications and materials listed above are for switchlocks with standard options. For information on specific and custom switchlocks, consult Customer Service Center.

Ordering Number

To order, simply select desired option from each category and place in the appropriate box. Available options are shown and described on pages 2 and 3. For additional options not shown in catalog, consult Customer Service Center.



PM Series

5 Tumbler Miniature Snap-in Switchlocks



Switch and Lock Function

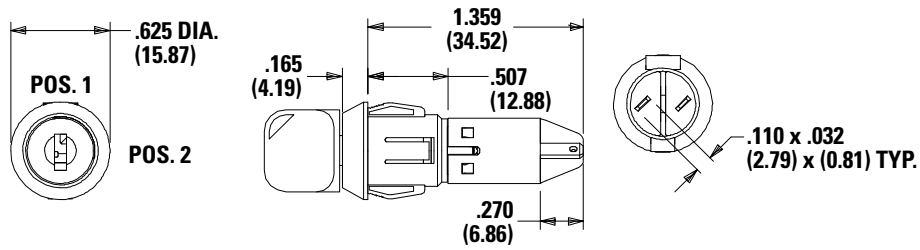
SP

NO Poles	Model No.	Switch Function		Key Pull Positions	Lock Configuration	Indexing
		POS. 1	POS. 2			
SP	PM0613	Off	On	Position 1		90°
	PM061U			Positions 1 & 2		

Legend

- = Detent Position (90°)
- ◉ = Key pull possible in these positions.
- ⊙ = Stop Positions

Dimensions inches (mm)

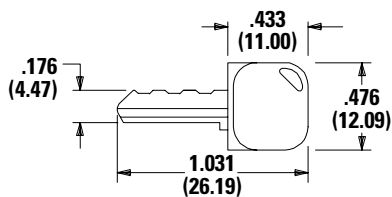


Notes: Part number shown: PM0613EBM05KQ22

All models **C&K** US with all options when ordered with 'Q' contact material.

Keying

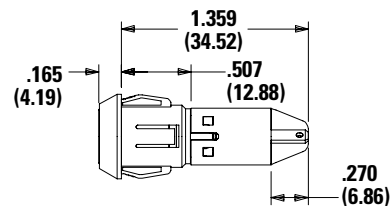
E - Two Nickel Plated Brass Keys with Insert Molded Plastic Head



Key part number: 617D1004102

Lock Type

B - 5 Tumbler Lock with Detent



Option Code	Key Color
2	Black

Option Code	Lock Color
2	Black

Notes:

Molded plastic head color is black, standard. For more than one key code, replacement keys, or other special features, consult Customer Service Center.

PM Series

5 Tumbler Miniature Snap-in Switchlocks



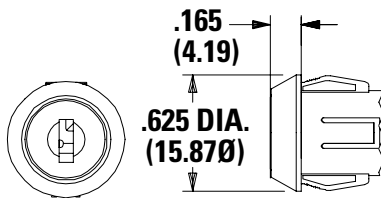
Lock Finish

M - Plastic Lock with Matte Finish



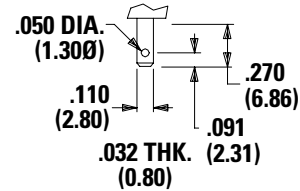
Lock Style

K - Cone Shaped Facing

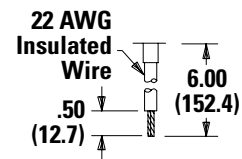


Terminations

05 - Quick Connect

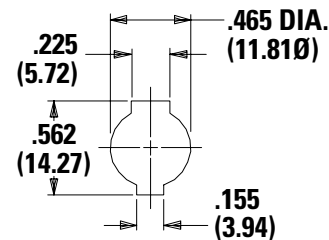


WC - Wire Lead



Notes:
UL style 1015. Black wire standard, other colors and lengths available, consult Customer Service Center.

Panel Mounting



Panel Thickness: .050-.080 (1.27-2.03)

Contact Material

Option Code	ROHS Compliant ¹	ROHS Compatible ¹	Contact and Terminal Material	Rating
Q	Yes		Silver ³	Power 4 AMPS @ 125 V AC or 28 V DC; 2 AMPS @ 250 AC V AC (UL/CSA).
B	Yes		Gold ²	Low Level / Dry Circuit 0.4 VA Max. @ 20 V AC or DC max.

Notes:
 1. See Technical Data section of this catalog for RoHS compliant and compatible definitions and specifications.
 2. **Contacts & Terminals:** Copper, with gold plate over silver plate termination
 3. **Contacts & Terminals:** Copper, silver plated (standard with all termination options)
 All models **C&K** with all options when ordered with 'Q' contact material.

Available Hardware



Notes:
Key Code: 041, Part No. (One Key), 617D1004102, Black
Material: Brass
Finish: Nickel plate, 6/6 Nylon insert molded head

Disclaimer Notice - Information furnished is believed to be accurate and reliable. However, users should independently evaluate the suitability of and test each product selected for their own applications. Littelfuse products are not designed for, and may not be used in, all applications. Read complete Disclaimer Notice at <http://www.littelfuse.com/disclaimer-electronics>.