

# R Series

## ROTA-SLIDE® Rotary Switches



### Description

R series Rota-Slide® rotary switches are often found in industrial equipment, portable tools and ceiling fans. The R series are known for being high-quality, long lasting switches that feature positive detent, multi-pole and multi-position capabilities and panel or PCB mounting.

### Features & Benefits

- Multi-pole and multi-position
- Enclosed
- Positive detent
- RoHS Compliant
- Panel and PCB mounting

### Applications

- Ceiling fans
- Portable tools
- Industrial equipment
- Lighting

### Agency Approvals

Agency	Agency File Number
	E42363

**Notes:** Specifications and materials listed above are for switches with standard options. For information on specific and custom switches, consult Customer Service Center.

### Specifications

<b>Contact Rating</b>	Q contact material: 5 amps @ 125 V AC; 2.5 amps @ 250 V AC; 0.5 amp @ 125 V DC; 1/8 HP @ 125 and 250 VAC (UL/CSA).
<b>Electrical Life</b>	10,000 make-and-break cycles at full load
<b>Contact Resistance</b>	Below 10 m Ω typ. initial @ 2-4 V DC, 100 mA, for both silver and gold plated contacts
<b>Insulation Resistance</b>	10 <sup>9</sup> Ω min
<b>Dielectric Strength</b>	1,000 Vrms min. @ sea level
<b>Indexing</b>	36°-one contact models, 10 position max.; two contact models, 5 position max
<b>Operating &amp; Storage Temperature</b>	-30°C to 95°C

### Materials

<b>Housing &amp; Bushing</b>	6/6 nylon (UL 94-V2)
<b>Actuator</b>	
<b>Contacts &amp; Terminals</b>	Q contact material: Copper, silver plating
<b>Contact Spring</b>	Music wire or stainless steel
<b>Mounting Nut</b>	Steel, zinc plated
<b>Terminal Seal</b>	Epoxy

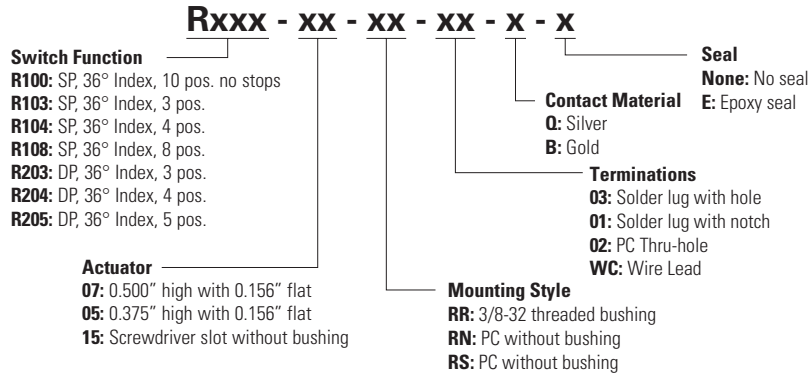
# R Series

## ROTA-SLIDE® Rotary Switches



### Ordering Number

To order, simply select desired option from each category and place in the appropriate box. For additional options not shown in catalog, consult Customer Service Center.

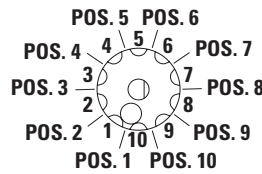


### Switch Function

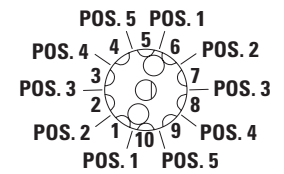
#### SP Models 36° Indexing

No. Poles	Model No.	Switch Function	Terminals
SP	R100	10 Positions No Stops	All Terminals
	R103	3 Positions	10-1-2-3
	R104	4 Positions	10-1-2-3-4
	R108	8 Positions	10-1-2-3-4-5-6-7-8

#### SP Models 36° Indexing Schematic

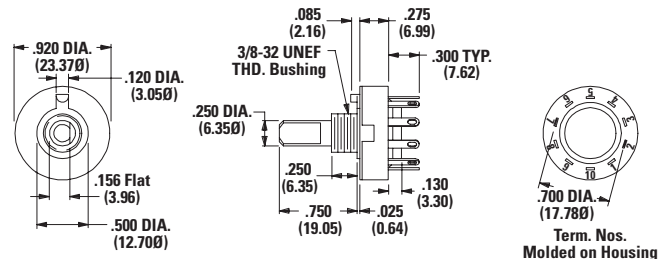


#### DP Models 36° Indexing Schematic



#### DP Models 36° Indexing

No. Poles	Model No.	Switch Function	Terminals
DP	R203	3 Positions	10-1-2-3, 5-6-7-8
	R204	4 Positions	All Terminals
	R205	5 Positions	



Part number shown: R10007RR03Q

**Notes:** All models C&K US with all options when ordered with 'Q' contact material. Break-before-make contacts. Actuators and contacts are shown in position 1. No common terminal is present. Switching function is provided by movable contacts shorting adjacent pairs of stationary contacts.

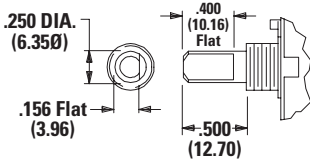
# R Series

## ROTA-SLIDE® Rotary Switches



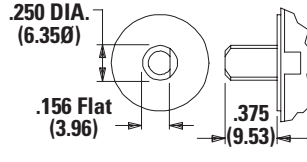
### Actuator

07 0.50019" High with 0.156" Flat



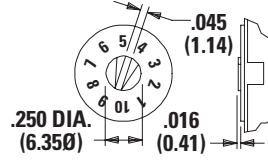
Shown with 'RR' mounting style.  
For mounting styles without bushing,  
add 0.250 (6,35) to actuator length.

05 0.375" with 0.156" Flat



Shown with 'RN' mounting style.

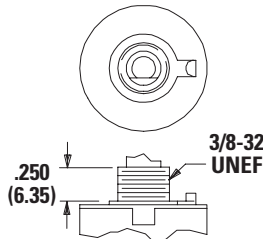
15 Screwdriver Slot



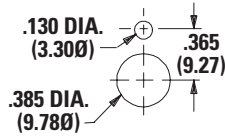
Arrow on actuator marked red (std.).  
Shown with 'RS' mounting style.

### Mounting Style

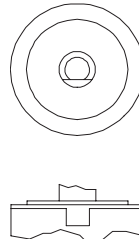
RR 3/8-32 Threaded Bushing



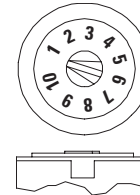
### Panel Mounting



RN PC Without Bushing



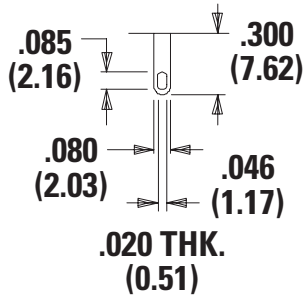
RS PC Screwdriver Slot Without Bushing



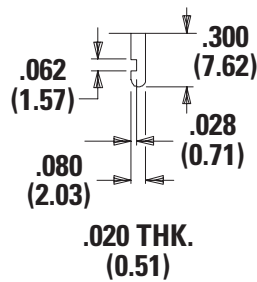
Position numbers and characters  
are molded on housing.

### Terminations

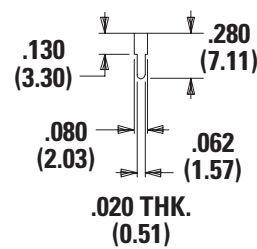
03 Solder Lug With Hole



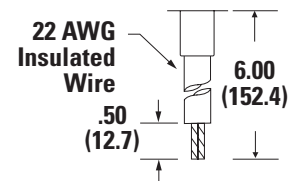
01 Solder Lug With Notch



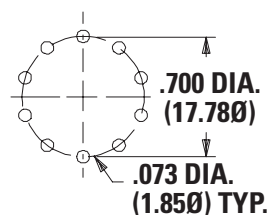
02 PC Thru-Hole



WC Wire Lead



### PC Mounting




# R Series

## ROTA-SLIDE® Rotary Switches



### Contact Material

Option Code	Contact Material		Rating
Q	Silver <sup>2</sup>	Power	5 amps @ 125 V AC; 2.5 amps @ 250 V AC; 0.5 amp @ 125 V DC (UL/CSA); 1/8 HP @ 125 and 250 VAC (UL/CSA)
B	Gold <sup>1</sup>	Low Level / Dry Circuit	0.4 VA max. @ 20 V AC or DC max.

**Notes:** See Technical Data section of this catalog for RoHS compliant and compatible definition and specifications. Any models supplied with Q, B or G contact material are RoHS compliant. All models **C**  **US** with all options when ordered with 'Q' contact material.

**1. Contacts & Terminals:** Copper, with gold plate over nickel plate.

**2. Contacts & Terminals:** Copper, silver plated. (Standard with all termination options.)

None No Seal

Seal

E Epoxy Seal



**Disclaimer Notice** - Information furnished is believed to be accurate and reliable. However, users should independently evaluate the suitability of and test each product selected for their own applications. Littelfuse products are not designed for, and may not be used in, all applications. Read complete Disclaimer Notice at <http://www.littelfuse.com/disclaimer-electronics>.