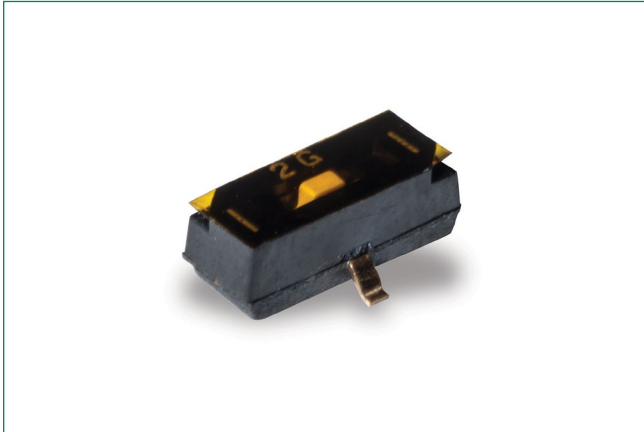


TDD Series

Jumper Switch



Description

Designers working on hand-held electronic devices, portable computers and instrumentation and control systems turn to TDD series jumper switches because of their reputation for being high quality and long lasting. The TDD series includes bifurcated contact for increased electrical reliability and are process sealed to still work perfectly during surface mount soldering or washable processing.

Features & Benefits

- Bifurcated contact for increased electrical reliability
- Process sealed for surface mount soldering and washable processing
- RoHS compliant

Applications

- Hand-held electronic devices
- Portable computer and electronic devices
- Instrumentation and controls
- Inverters

Specifications

Contact Rating	25 mA @ 24 V DC (switching) or 100 mA @ 50 V DC (steady state)
-----------------------	---

Mechanical & Electrical Characteristics

Mechanical and Electrical Life	200 cycles at rated loads
Contact Resistance	100 mΩ max. initial. @ 2 V DC / 10 mA
Insulation Resistance	100 MΩ @ 100 V DC min.
Dielectric Withstand Voltage	300 V AC / 1 minute

Environmental Characteristics

Storage Temperature	-40°C to 85°C
Operating Temperature	-40°C to 85°C
Operating Force	4.9 N max.

Process

Solderability	Per MIL-STD-202F method 208D, or EIA RS-186E method 9 (1 hour steam aging)
Packaging	1,000 pieces tape & reel

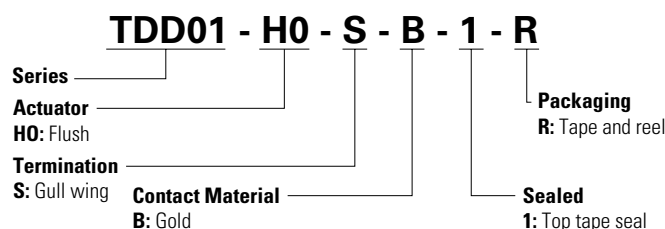
Materials

Case & Cover	PPS, color black (UL 94 V-0)
Actuator	LCP (UL 94 V-0)
Contacts	Copper Alloy with Gold over Nickel plate
Terminals	Copper Alloy with Gold over Nickel plate, insert molded
Tape Seal	Polyamide

Note: Specifications and materials listed above are for switches with standard options. For information on specific and custom switches, consult Customer Service Center. For Tin Lead options consult customer service center.

Ordering Number

The Build-A Switch concept allows you to mix and match options to create the switch you need. Below is a complete listing of options shown in catalog. To order, simply select desired option from each category and place in the appropriate box.



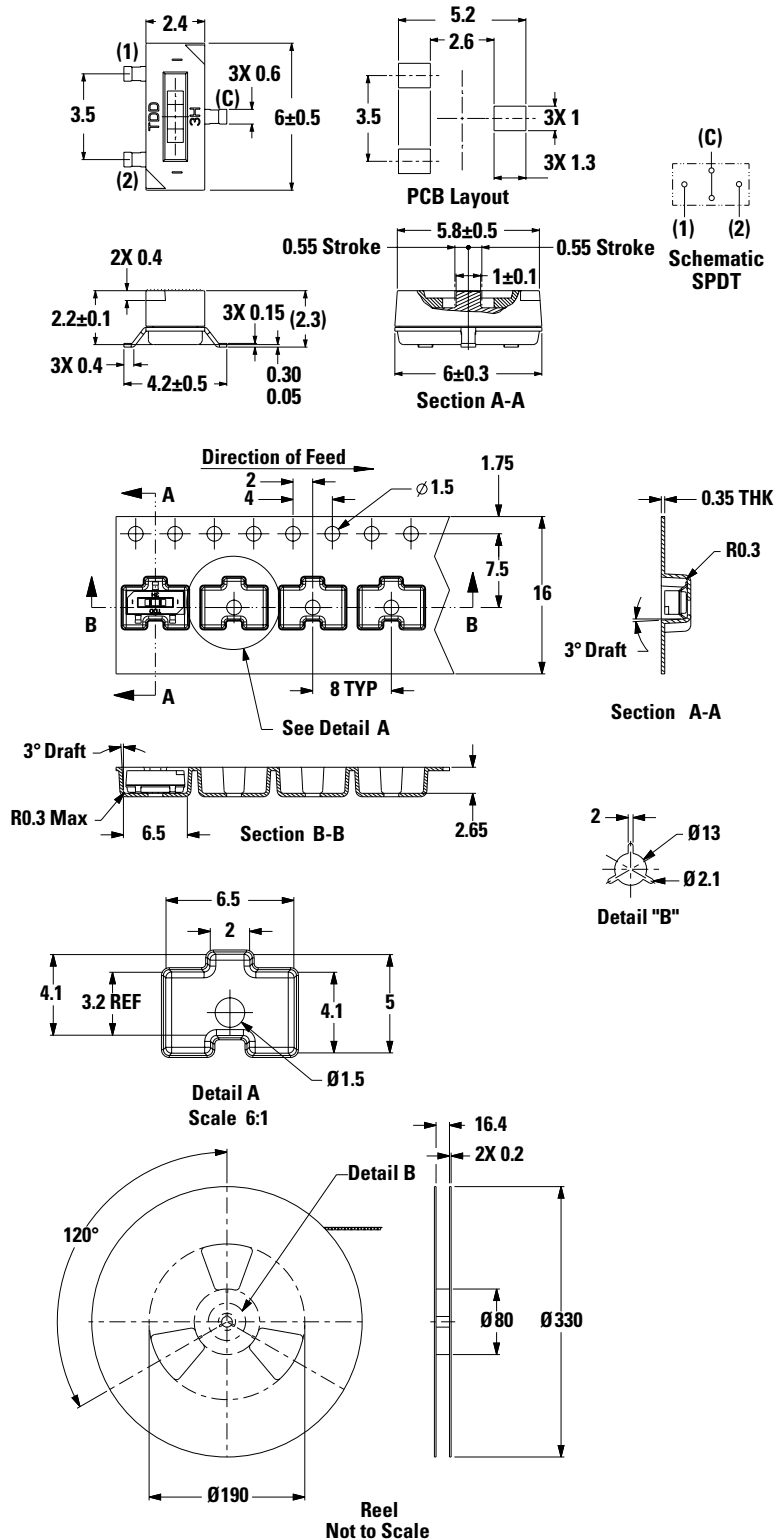
Note: All switches supplied in "OFF" position..

TDD Series

Jumper Switch



TDD Series Drawing and Dimensions (mm)



Disclaimer Notice - Information furnished is believed to be accurate and reliable. However, users should independently evaluate the suitability of and test each product selected for their own applications. Littelfuse products are not designed for, and may not be used in, all applications. Read complete Disclaimer Notice at <http://www.littelfuse.com/disclaimer-electronics>.